

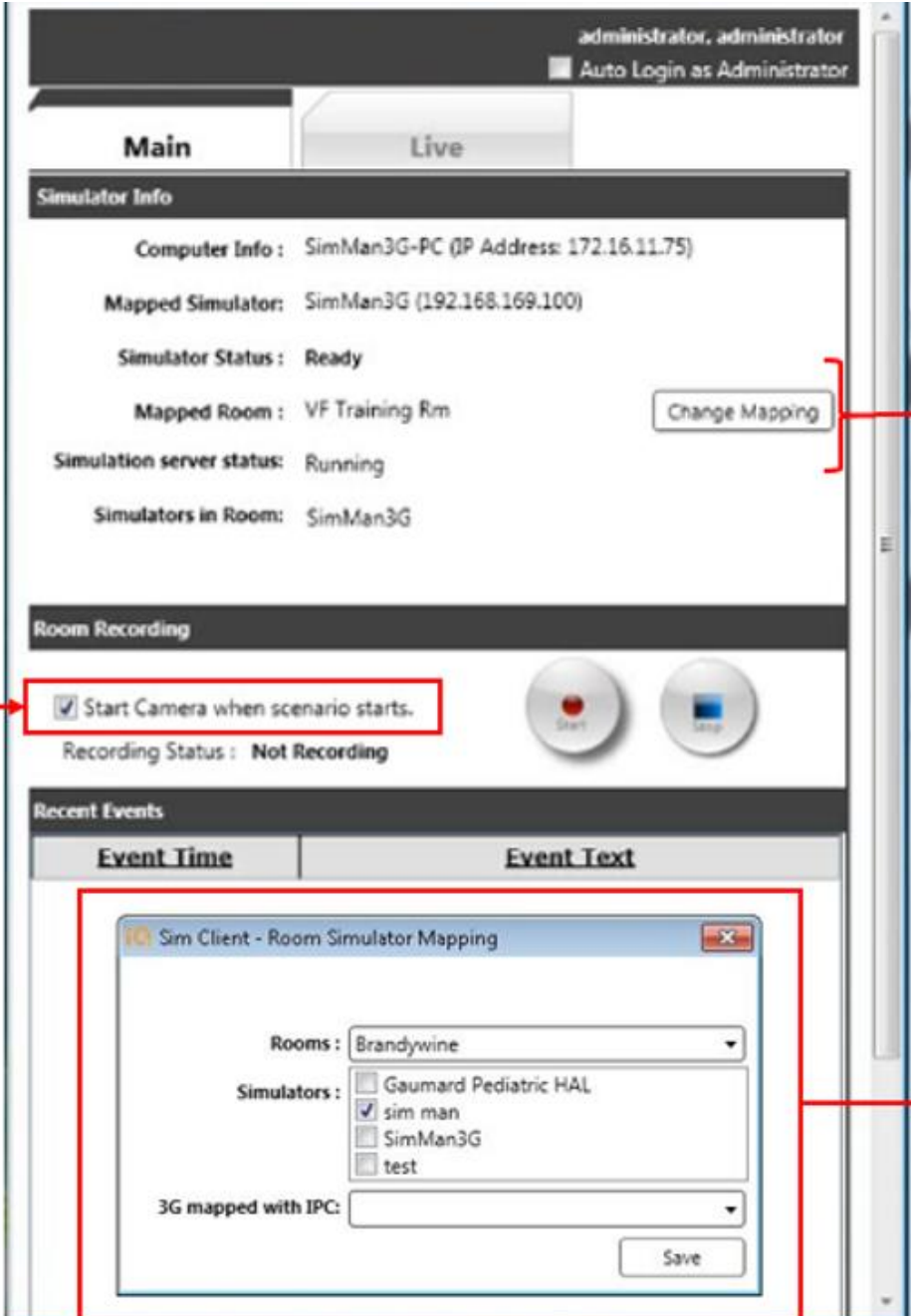
SIM Client

The SIMULATIONiQ Enterprise SIM Client application can be started on the integrated instructor laptop by double-clicking on a desktop icon or selecting the application from the Windows All Programs desktop menu (SIMULATIONiQ Enterprise folder).

The SIM Client application is installed on all Laerdal 3G laptops for ease in operating the simulator events; this integrates with the Vitals monitor and simultaneously operates the Video cameras. There are two tabs: **Main and Live**

SIM Client Main Tab

The Main tab appears as follows:



administrator, administrator
 Auto Login as Administrator

Main Live

Simulator Info

Computer Info : SimMan3G-PC (IP Address: 172.16.11.75)

Mapped Simulator: SimMan3G (192.168.169.100)

Simulator Status : Ready

Mapped Room : VF Training Rm Change Mapping

Simulation server status: Running

Simulators in Room: SimMan3G

Room Recording

Start Camera when scenario starts. Start Stop

Recording Status : Not Recording

Recent Events

Event Time	Event Text
<div style="border: 1px solid red; padding: 5px;"> <p>Sim Client - Room Simulator Mapping</p> <p>Rooms : Brandywine</p> <p>Simulators : <input type="checkbox"/> Gaumard Pediatric HAL <input checked="" type="checkbox"/> sim man <input type="checkbox"/> SimMan3G <input type="checkbox"/> test</p> <p>3G mapped with IPC: <input type="text"/></p> <p>Save</p> </div>	

The following information appears on the **Main** Tab:

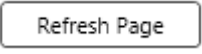
- **Computer Info:** This is the name of the instructor laptop PC with its IP Address.
- **Mapped Simulator:** Any simulator mapped to this PC is shown here.

- **Simulator Status:** Will display Offline, Ready, or Started.
- **Mapped Room:** This is the name of the room containing the simulator(s).
- **Simulation Server Status:** This is the status of the simulation server.
- **Simulators in Room:** These are the available simulators to be mapped to the room.

To change the simulator mapping, press the **Change Mapping** button. This calls up the **Room Simulator Mapping** screen as shown. Select a room from the drop-down menu and then select the simulator you want to map to the room (the room is configured in the Settings module within the web application). Select a 3G simulator if available for mapping from the **3G mapped with IPC** field (only 3G is currently supported). Click **Save** to retain selections.

Click the **Start Camera When Scenario Starts** checkbox, and the cameras will automatically start recording when the Scenario is started either manually or through an automated session. The **Recording Status** is updated accordingly (either Recording or Not Recording).

Use the **Start** and **Stop** buttons to manually control the recording session in either the Main or the Live tabs.

Press the  button to return to your original settings.


SIM Client Live Tab

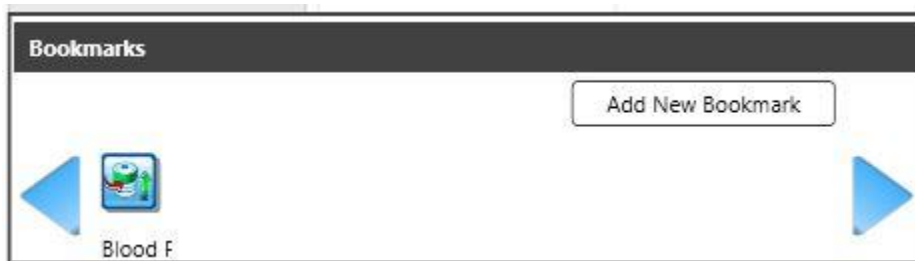
Use the **Live** tab to add bookmarks and view the camera feed, as well as change camera selections, as seen below.

The screenshot displays the SIMULATION iO Enterprise web interface. At the top right, it shows the user is logged in as 'administrator, administrator' with an 'Auto Login as Administrator' checkbox checked. Below this are 'Main' and 'Live' tabs, with 'Live' being the active tab. A 'Bookmarks' section contains an 'Add New Bookmark' button and a bookmark for 'Blood F'. The 'Cameras' section features a 'Rooms:' dropdown menu set to 'Bed 1A' and a radio button for 'VFCam1'. The 'Camera Preview' section shows a live video feed of a medical simulation where a group of students is practicing on a mannequin. Below the video is a 'Recording' section with 'Start' and 'Stop' buttons and a 'Recording Status: Not Recording' indicator. The bottom section, 'Camera control and Preset', includes a 'PAN & TILT' directional pad, 'ZOOM' controls with 'IN' and 'OUT' buttons, and a 'PRESETS' list with buttons for 'Preset 1', 'Preset 2', 'Preset 3', and 'Preset 4'.

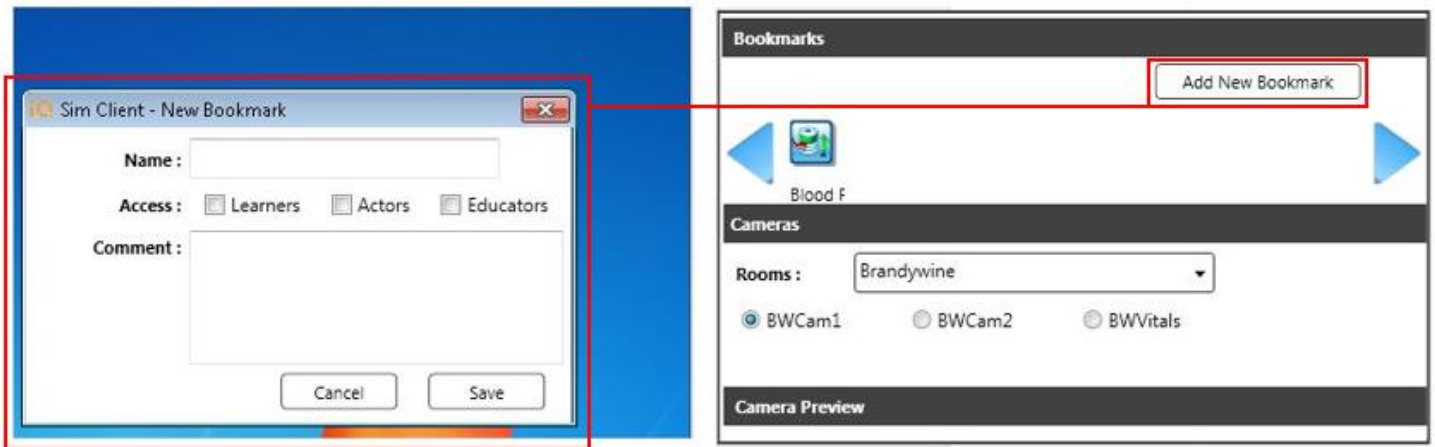
Note: Room camera presets that appear here are carried forward from AV Control. For this reason, they cannot be modified in SIM Client; PTZ camera functionality is also inoperative. Room and camera selection is available.




After you have selected your room and camera, press  to begin recording. From here, select any of the following icons to assign your recording to an existing bookmark group.



You can also click the **Add New Bookmark** button as follows to assign the video independently of a bookmark group.



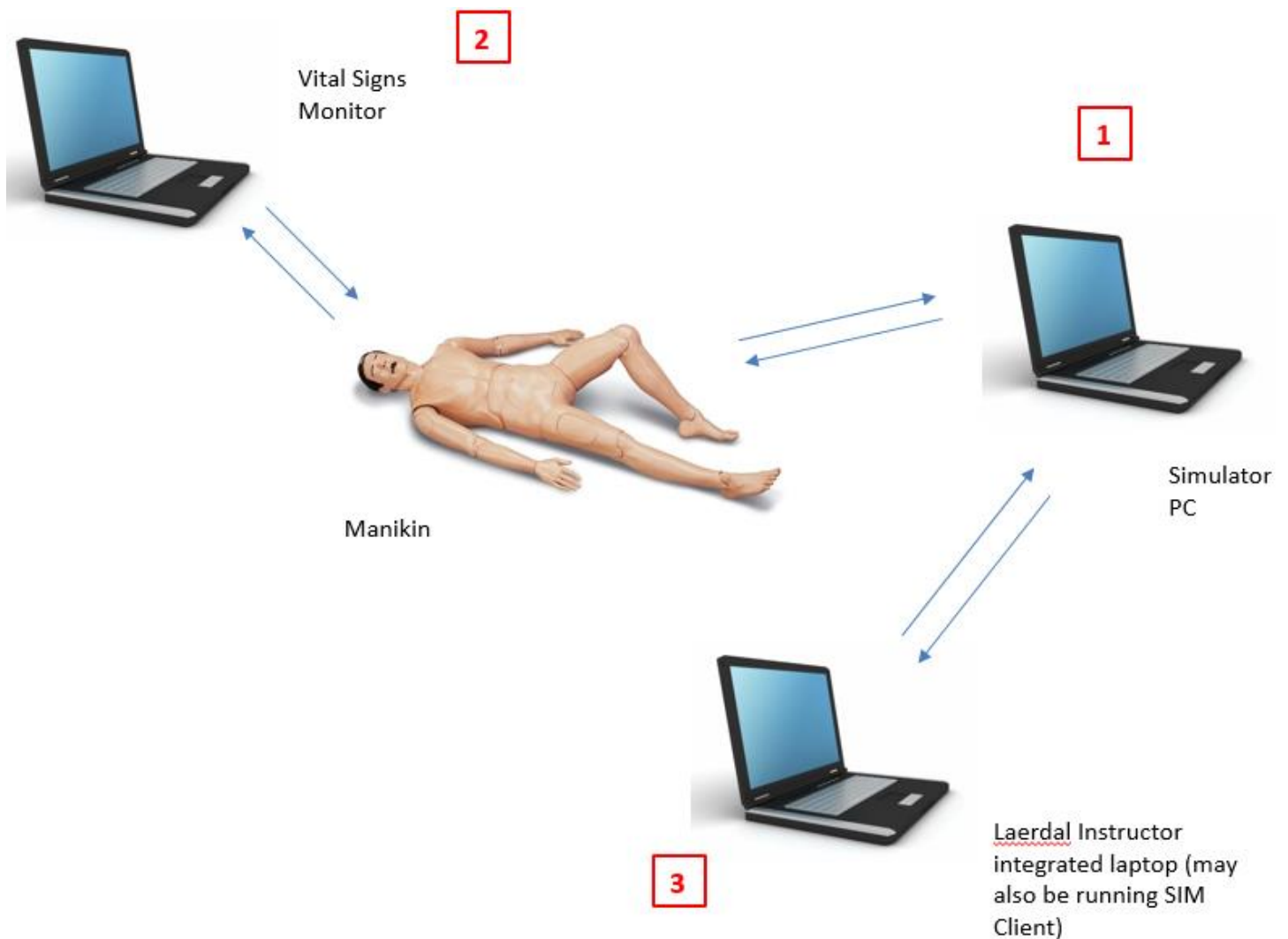
Enter the name of the bookmark, designate the access by clicking the desired user type, and enter any comments for the bookmark in the text box. Click **Save** to retain your selections. When you have finished

recording, press  .

Note: Indexed and non-indexed video can be accessed from the grid next to the **Explore** tab in the Video Web application (see related documentation for more information).

Component Configuration

SIM Client operates in a configuration with other components similar to the diagram as follows:



Activating the Simulator

(**Note:** This could include a wireless Laerdal manikin.)

Turn on the devices in the following order:

1. First, turn on the Simulator.
2. Second, turn on the Vital Signs Monitor.
3. Third, turn on Laerdal Instructor laptop.

The Laerdal Instructor Laptop should be hardwired with an Ethernet cable. This enables the laptop to communicate with the AV and Web applications; the Laerdal laptop communicates to the simulator wirelessly.

Log on to the Laerdal laptop and double-click the Laerdal Instructor icon on the desktop to launch the program. Mouse over the network connections on the lower right system tray of the Laerdal Instructor's laptop; this is a check that you see both connections.

Select the manikin model; log on using the password credentials. Click **OK**.

Choose the middle icon: **Start Instructor Mode Scenario**. Choose **Healthy Patient**; press the **Session** button to activate the software page. Specify any scenario settings prep now (heart rate, etc.).

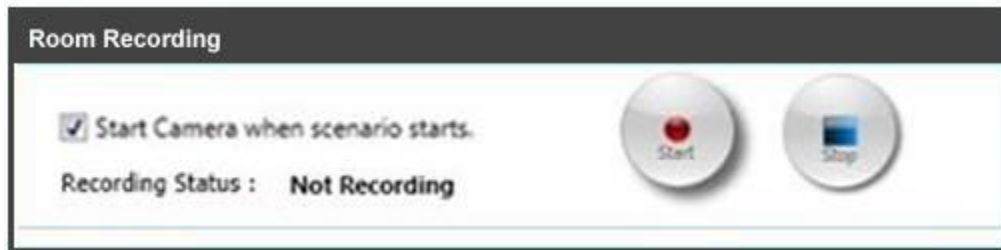
Click the **Pause** button; at this point, activate SIM Client.

Note: It is important to follow the steps in this order; activate the Laerdal Instructor Laptop application before activating SIM Client. Otherwise, scenario preparation time will be recorded also, which is not part of the scenario.

Activating SIM Client

Move the mouse to the top of the window to see the Menu bar in the simulator application. Go to the **View** menu and uncheck **Full Screen** to allow the window to display the **Maximize**, **Minimize**, and **Close** icons in top right of the window. Minimize the screen to access the desktop.

Note: It is recommended that you configure and save room camera presets in AV Control at this time if you haven't done so already.



Launch SIM Client; check the **Start Camera When Scenario Starts** checkbox as shown (this feature automatically starts the recording in the AV application; the recording automatically stop when Debrief is selected in the simulator application).

Go back to the Laerdal application on the Laerdal Instructor laptop. At this point, the students go into the room to start the scenario.

Running the Scenario

Click **Resume Session** within the Laerdal application to start the recording; the AV Viewer should display that the recording has started. Events from the instructor laptop will display in AV Viewer under the **Bookmark column** (see below):

Time	Bookmark	Type	Delete
00:06	ECG leads attached(MonitorEcgLeadsAttached)	Event(administrator, administrator)	
00:06	SpO2Probe	Event(administrator, administrator)	
00:07	ABP sensor connected(MonitorABPSensor)	Event(administrator, administrator)	
00:07	PAP sensor connected(MonitorPapSensors)	Event(administrator, administrator)	
00:07	Scenario Started	Event(administrator, administrator)	
00:07	HR: value: 80 BP: Systolic: 126 / Diastolic: 84	Event(administrator, administrator)	
00:08	CO2 sensor connected(MonitorCO2Sensor)	Event(administrator, administrator)	
00:09	HR 77	Event(administrator, administrator)	

21 Record(s) Found

For wireless SimMan3G, speech sounds and changing monitors will not carry over; use comments to annotate those actions (Under **Display** events, click the **Add Comment** button and type in comment).

Completing the Scenario

When the scenario is complete, select **End Session**. This calls up a menu including the Debrief selection; select **Debrief** to complete the scenario (a message displays stating that the system will transfer files). This also stops the recording in AV Viewer. You can also print a list of events from the Laerdal computer by selecting **File > Print (optional)**.

Close the **List of Events** window. A message will display asking if you want to Exit; select **Yes** if finished or select **No** if you want to continue recording another simulation session (you will receive a message asking if you want to save the scenario; this is not required).

Right-click on the **SIM Client** icon in the system tray and select Exit. This will close SIM Client. You can index the recorded video via the AV Web application (see the Indexing a Video topic in the SIMULATIONiQ Enterprise Online Guide for more information).